

Thank you for purchasing the

SWAPHelper.COM 11-12 BEZEL KIT

For this installation you will need:

2011 to 2012 Lariat or above center dash bezel

2005 to 2007 Super Duty Manual HVAC controls

Tape for guidelines

Epoxy for plastic materials

Cutting snips

File tool

Basic instructions:

Take two pieces of tape and align them on the radius of the opening of the original electronics controls like so:



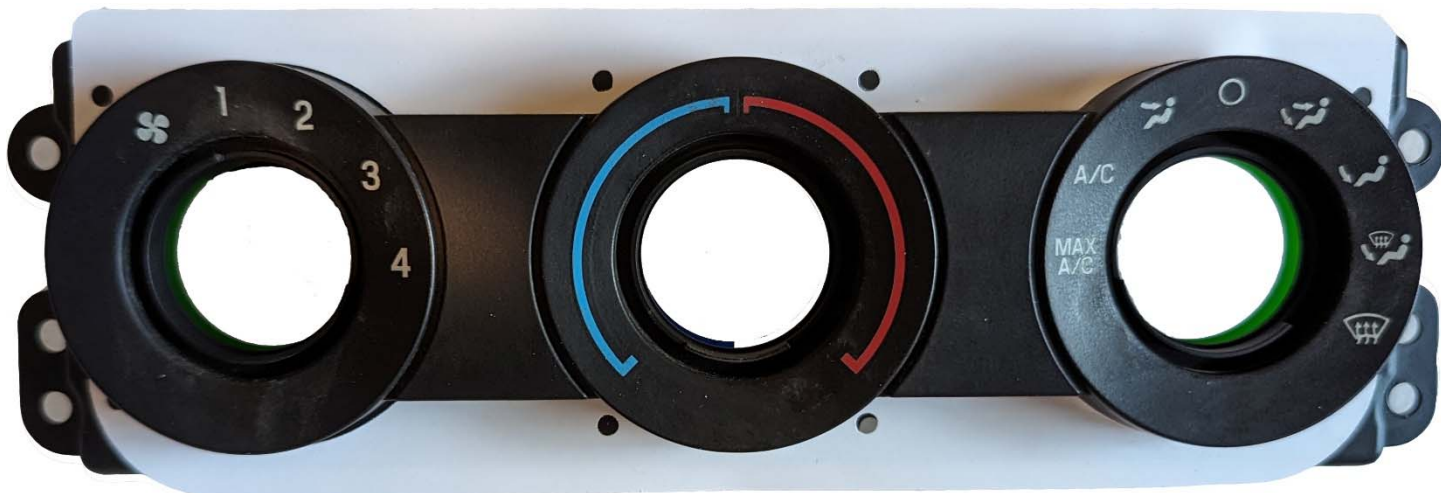
Then carefully trim the bar from the center, it helps to score it with box cutter:



After removing the bar, carefully file the edges – this will be a finished edge, so take your time (we recommend using a hand file for the final work, not a Dremel):



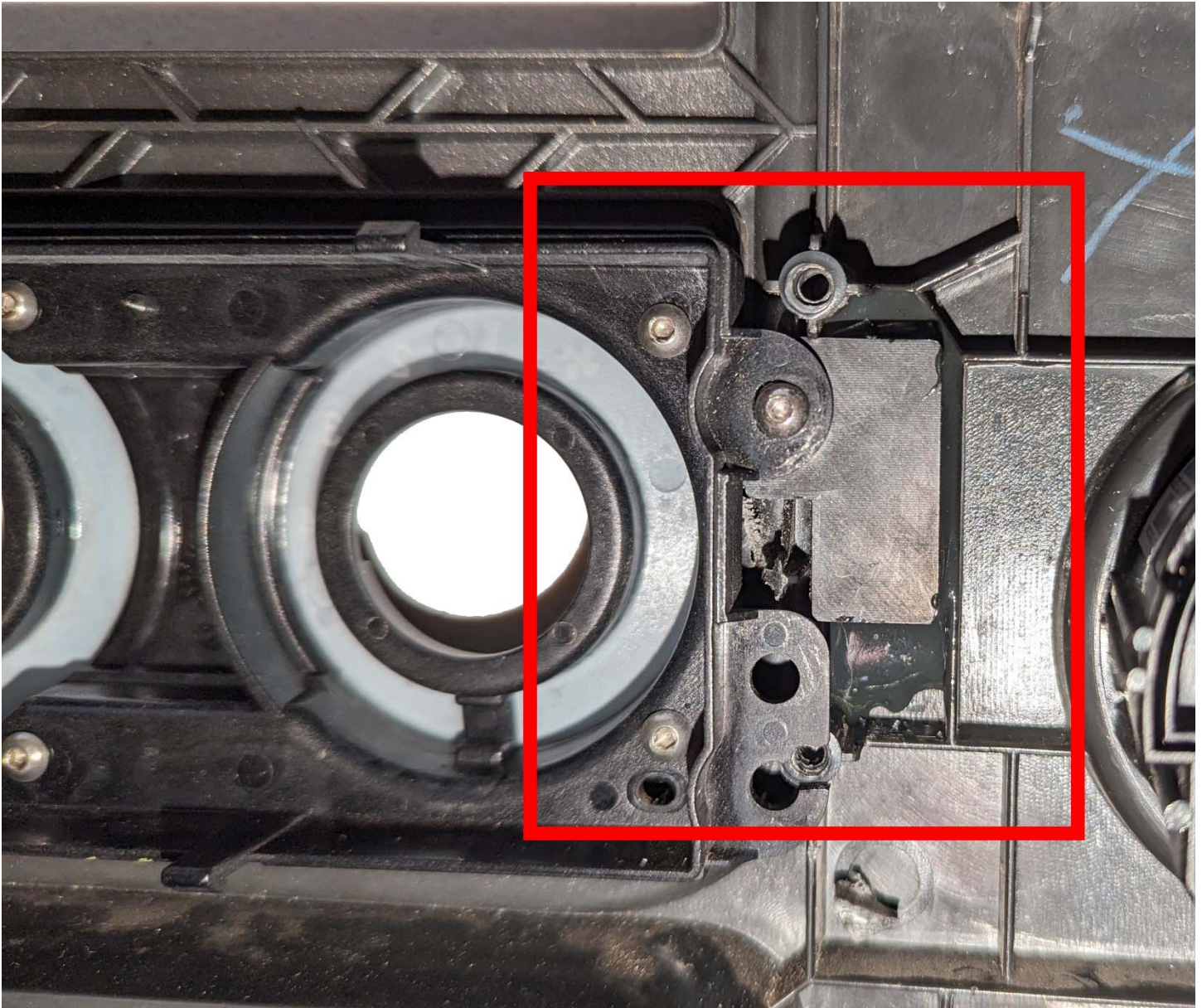
Disassemble the 2005 to 2007 Super Duty controls and attach the provided templates as shown below:



You will then drill holes in the locations indicated by the template. You can then attach the bezel filler pieces with the included m3x6mm screws and test fit to the bezel:

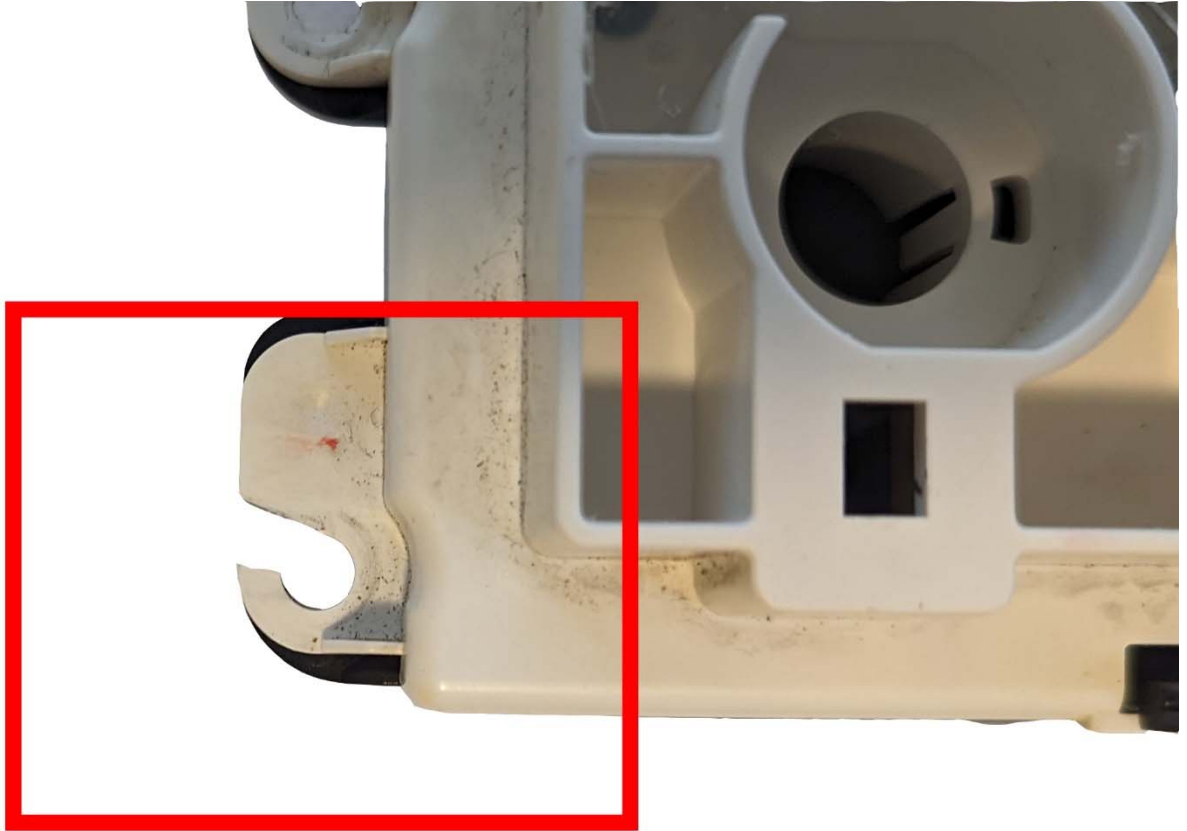


You will then need to attach the two mounting blocks to the HVAC control face using the included screws (m3x12mm) and epoxy the blocks into the dash bezel. It is important to make sure the HVAC controls are sitting as close to flush on the front of the dash bezel as possible:



Once the epoxy has finished drying and the blocks are permanently mounted, remove the HVAC bezel from the dash bezel.

A small cut is required on both lower screw mounting holes on the 2005 to 2007 HVAC controls to allow the original dash bezel screws to be used to hold the lower portion of the controls in the dash bezel:



At this point, you should be able to install your HVAC controls in the dash bezel.

That's it, your HVAC bezel install kit installation is finished!

Optional LED installation:

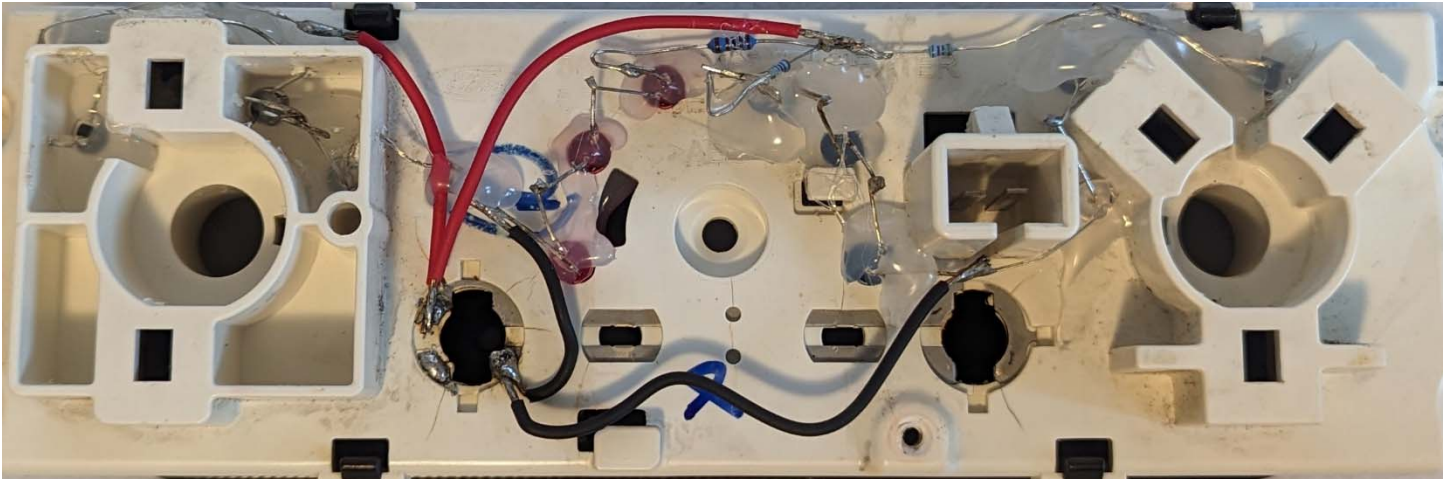
The 2005 to 2007 Super Duty HVAC controls emanate a green colored light when the illumination is active – if you are installing this on a 2008 to 2010 style dash and need green, you are good to go, no modifications needed. But if you want to change the color using the included LEDs, follow this guide.

The kit includes 6x diffused white LEDs, 3x blue diffused LEDs, 3x red diffused LEDs and 4x resistors. To do this install, you will need a wire, soldering iron, glue gun and a 5mm drill bit (3/16" to 1/4").

Here are example pictures of the LED placement:

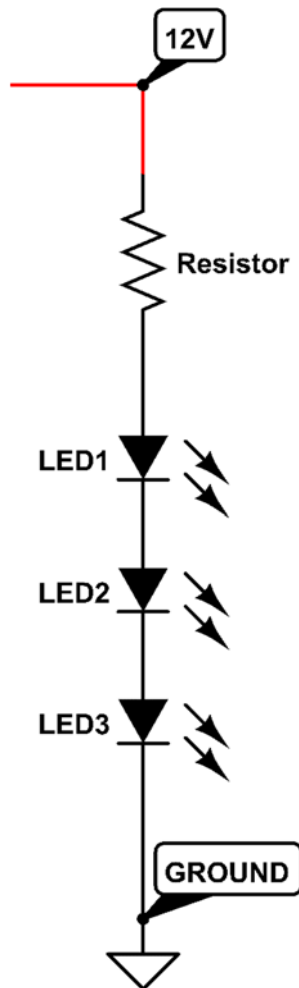


And here is an example of the wiring layout on the backside, note the **red** wire is 12v and the **black** wire is ground:



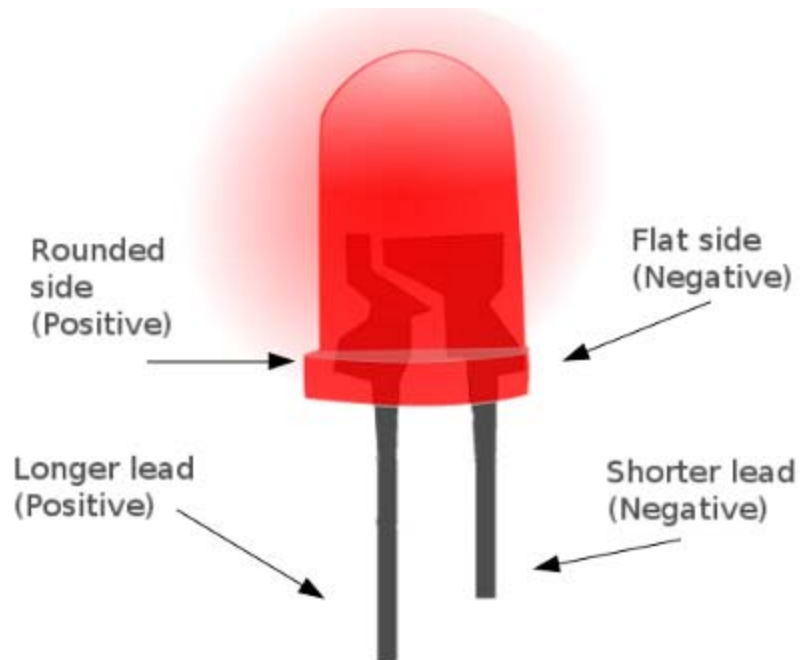
****This was a quickly built example and could look much better with more attention****

There are four sections/strands of three LEDs a piece – 3x **white** LEDs with one strand on either side, 3x **red** LEDs and 3x **blue** LEDs. The LEDs should be wired as such:



You should use the hot glue as shown on the front of the LEDs to increase the diffusion, thus creating a more uniform distribution of the emitted light. The included resistors are 10k Ohm; if you want the LEDs brighter, decrease the resistance, and if you want them dimmer, increase the resistance.

LEDs are polarity dependent, so please note the below diagram when connecting the LEDs into strands:



Thanks again for purchasing the SwapHelper.com 11-12 Bezel Kit!